

# FREY

Maschinenbau



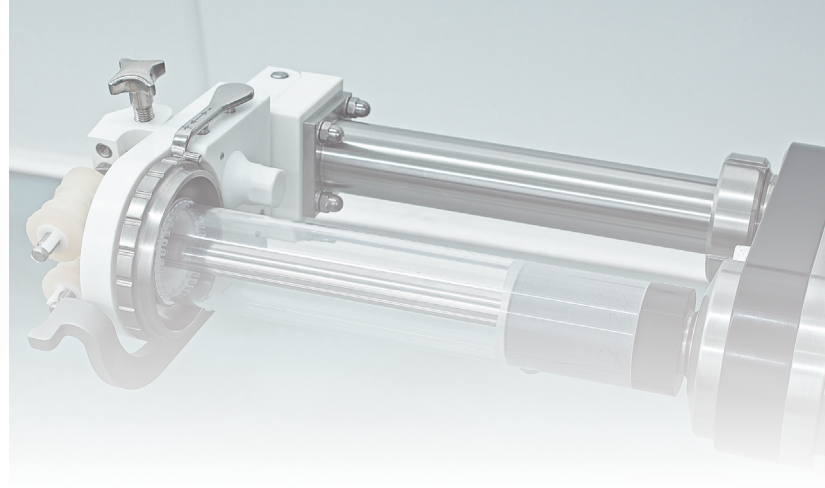
## F-Line F40

**Professional use thanks to an innovative filling technology**

*F-LINE F40 is the smallest model of the new vacuum filler generation of FREY. F40 is a vacuum stuffer made for smaller production plants.*

*F-LINE F40 offers nearly same functions as bigger vacuum stuffers and is therefore a great success regarding the price and performance.*

*F40 masters every kind of filling such as straight-filling, portioning and linking.*



#### Accessories:

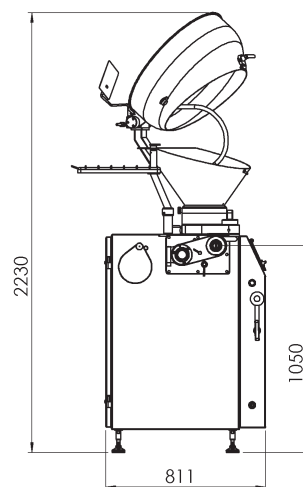
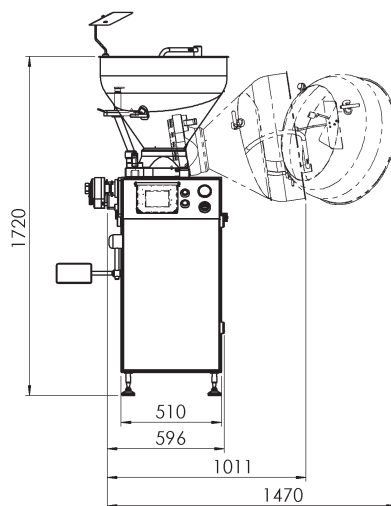
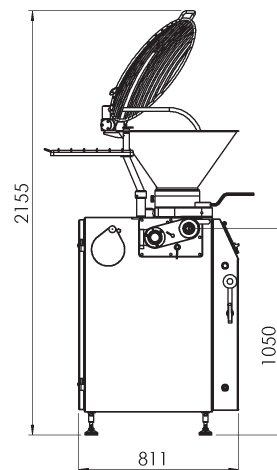
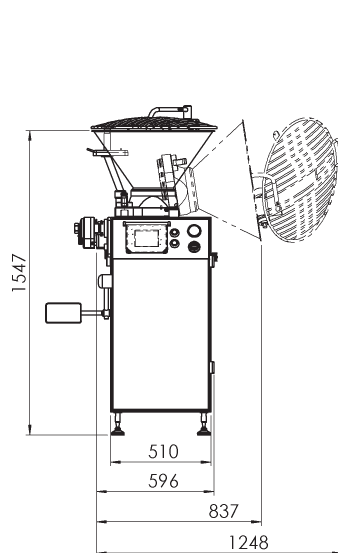
Rotor extractor  
 Outlet cleaner  
 Accessories holder  
 Counter screw  
 Grease gun  
 manual

#### Options:

Divisible hopper 25/90 litres  
 Waterproof plug connection  
 for clipping machines  
 Casing holder DHGN  
 Casing holder DHGA  
 Casing spooler DA2012  
 calibrating unit  
 Special tubes  
 Undercarriage on wheels  
 Equipment trolley  
 Installation

#### Flange size filling tubes:

for linking FL 35 mm  
 for straightfilling FL 73 mm



#### Technical data:

Capacity of the filling hopper	40 opt. 90 litres
Maximum filling power	1.900 kgs/h
Filling pressure up to max.	30 bar
Capacity of the chambers	82 g
Number of chambers	8
Portioning range	5-100.000 g
Voltage / tension	400 V / 50 Hz
Drive system	Frey Top Drive
Control type	TC100
Connected load F40P/F40A	max. 3,25/3,90 Kw
Suction power vacuum pump	16 cbm/h
Machine weight (net)*	380 Kgs
Portioning speed	max. 300 port/min

Heinrich Frey Maschinenbau GmbH

Fischerstr. 20  
 89542 Herbrechtingen  
 Germany

Telefon: +49 7324 172 0

Fax: +49 7324 172 44

[www.frey-maschinenbau.de](http://www.frey-maschinenbau.de)  
[info@frey-maschinenbau.de](mailto:info@frey-maschinenbau.de)





# **F-LINE F40** **compact und powerful**



## **F-LINE F40**

*F40 works with a stainless rotor system. No wearing out problems due to a well-thought construction and a most favourable material combination.*

*The vacuum pump is sucking off resting air bubbles (gaps) from the product. You get a perfect sausage aspect - the subsequent natural reddening is improved.*

*The large dimensions of the chambers care for your product and ensure good production results.*

*The standard F-LINE F40 model is equipped with a massiv 40 litres filling hopper. The low filling height makes a power-saving charging possible. The hopper is protected with an electronically locking protective grate.*

*Optionally we offer for our F-LINE F40 a divisible hopper with 25/90 liters. The charging of the hopper as well as the intermediate cleaning is made easier.*

*Thanks to the compact dimensions F-LINE F40 finds everywhere a place. Optionally an undercarriage is available.*

### **Casing holder device**

*A casing holder device DHGN for natural casings, which is easy in handling is available as an accessory for FREY vacuum stuffers. The casing holder device makes the filling process faster and easier. The casing holder DHGN was especially designed for natural casings. With the help of our casing holder devices you always get tight and solid sausages at maximum filling speed. Extra skilled staff is not needed, also unskilled persons can work at the filling station. The casing holder device can easily be mounted and with the linking gearbox the device can be swivelled to the side. The casing tension is infinitely adjustable.*



### **Drive concept**

*You can rarely hear the FREY Top Drive of F-LINE F40. The new Frey Top-drive of F-Line F40 offers a drive solution which is optimal in cost and ensures a high portioning and exactness performance.*

*We optimized the electric consumption of the electronic drives which now work extremely energy-efficient.*

### **Linking gear**

*F-LINE F40 is equipped with a linking gear without limits for your production. It has especially been developed for the industry and has just proved itself. For filling big diameters, you can easily take off the linking gear by means of a quick-closing. Thereby, the way of the sausage meat is shortened and the greasing is minimized.*

### **DHGA**

*Compared with the DHGN2 the DHGA is additionally equipped with a ceramic bearing with support for the casing holder tube (DHR) and the roller kit (ROKI). The casing holder device can also be used for collagene and cellulose casings. The DHGA ensures a continuous advance of the casing during the linking process. The DHGN2 and DHGA are maintenance-free because no drive is necessary.*

### **Casing spooler**

*Furthermore, we offer pneumatic casing spoolers (DA2012). They save time to increase the productivity of the filling station. In order to come up to your product diversity, you can receive special filling tubes or other attachments and respectively additional equipment from us, individually made for you.*



# Control unit TC100

**FREY**  
Maschinenbau

## Survey of functions:

- Weight input can be chosen between 0.1 and 100,000 g. (from 0,0 - 999,9 g in 0,1 g - steps)
- Number of links from 0 - 9,9 turns
- Clipping time
- Preselection of pauses for portioning and linking
- Normal- and continuous operation
- Filling programs with table of contents
- Service- and maintenance programs
- Diagnosis programs
- Counter of quantity and pieces, pre-selection of pieces
- Twist delay / twist advance of the linker
- 1st portion makeweight
- Speed control infinitely variable also during the filling process
- Relieve/sucking back mechanism
- Different languages adjustable
- Program administration with protection
- Software update per USB stick
- Interfaces: USB, Ethernet 10/100 Mbps
- Visualizing of linking process
- Logbook of the filling process and errors

## Options:

(In connection with external waterproof plug connection)

- Electronic pulse control for clipping machines
- Cliptime
- Connect of Frey C-Line components without CAN-BUS communication

## Touch Control TC100

with Touch screen use. The ultimate stuffer control system with all variety of functions consists of an industrial personal computer with ergonomic touch screen panel of 5,7".

The user interface is very compact and all informations are provided on a touch panel VGA display with 560x480 Pixel.

## Services

are nowadays more and more important. The reliability of our demonstrators and technicians stands for the high quality of FREY products. Our stuffers are well-thought out even in the smallest details. They are well-known for their long service life.

Our trained staff gives you also advice by phone, fax or email in order to be able to help you by return.

Subject to technical changes

