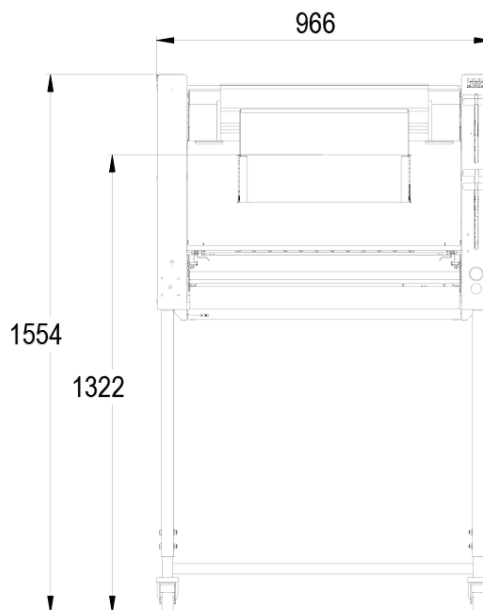
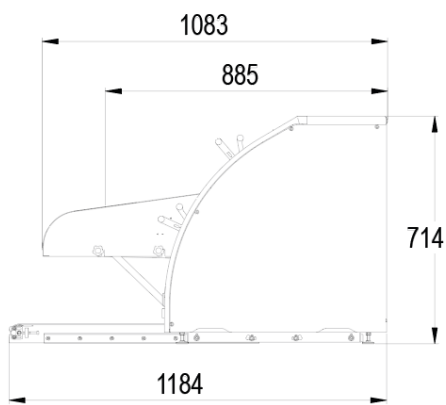


FORMA

- ✔ Vertical moulding to save space
- ✔ Three rolling rollers
- ✔ Ergonomic controls
- ✔ Quick belt change
- ✔ Stainless steel exterior



SPECIFICATIONS

Min/max weight of dough pieces in grams	50 / 1200
Three food-grade PETP rollers	•
Maximum speed in pieces per hour	1200
Motor power in kW	1.1
Flat bread outfeed	•
Net weight in kg	230

TECHNICAL SPECIFICATIONS

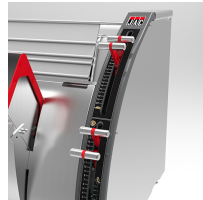
Power supply	230V single phase (ADDITIONAL COST),230V three-phase ,400V three-phase +N
Controls	Left ,right
Belt type	Wool ,Whooltop ,Synthetic
Chute type	Manual loading,Automatic loading
Options (Additional cost)	Pointed end belt, Outfeed belt, Variable speed control, Motorised outfeed belt

MAIN STRENGTHS



Rollers

Three food-grade polyethylene rollers



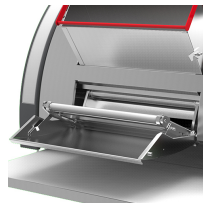
Adjustable rollers

The levers provide a high degree of accuracy and reduces the load on the wrist.



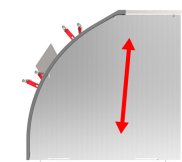
Forming belt

Ultra-quick belt change without disassembling the machine.



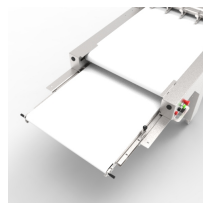
Flat breads

Opening the front door allows you to roll flat breads.



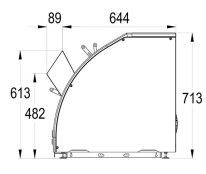
Vertical moulding

Vertical moulding to save space



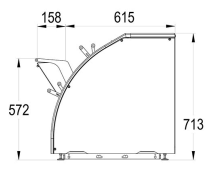
Motorised outfeed belt (option)

Facilitates unloading



Manual loading

Chute for manual loading



Automatic loading

Chute for automatic loading